

EASYPHONE-ALCATEL SMART 1

EASYPHONE SMARTPHONES NOW ARE EASY PEASY

NOW WITH A CHOICE OF 2 HOME SCREEN



SOS Button

Calls selected contacts in an Emergency



WhatsApp

Links to your WhatsApp



Camera

8MP + Flash



Favourite Contacts

Has picture speed dial



GPS Localization

Will send your location in an Emergency



Health

Can connect to Health RNHS Application



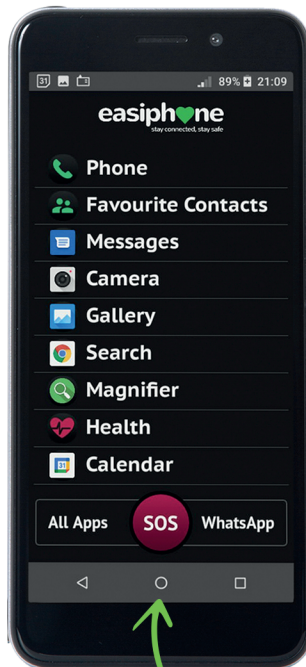
Magnifying

Helps in making reading easier

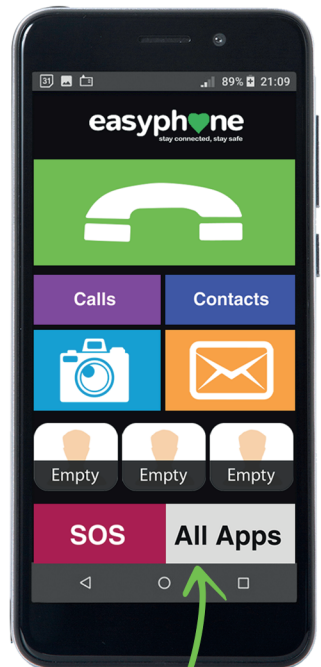


Loudness Boost

Easy



Easy-Peasy



EASY TO SWITCH BETWEEN THE 2 HOME SCREEN

When you first switch on the Phone you will see a message "enjoy.it" for approx 45secs. This will then disappear and you need to swipe up for Easyphone"

EASYPHONE-ALCATEL SET UP GUIDE



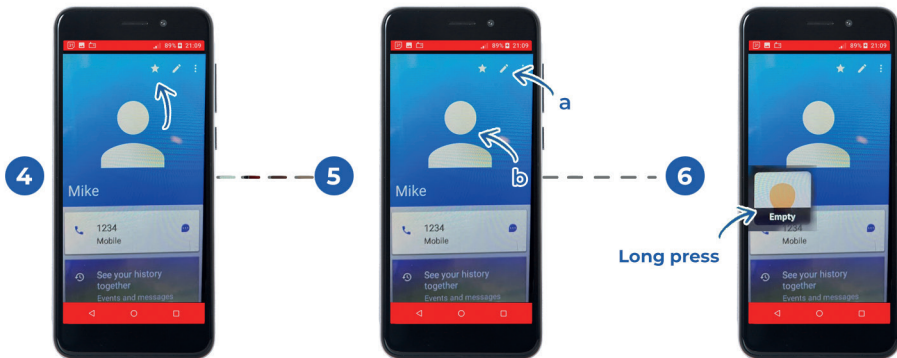
How to create contacts



On Home Screen
Go to **Phone**

Then Press To
Right Corner **Contacts**.
Here you will see all
your Contact

To add a new Contact Please
press Round Symbol at the
bottom of the screen. This will
allow you to create a new Contact
Don't Forget to hit save;



Now your contact is
created you can choose
which contacts are to
become your favourites
by press the **Star Icon**

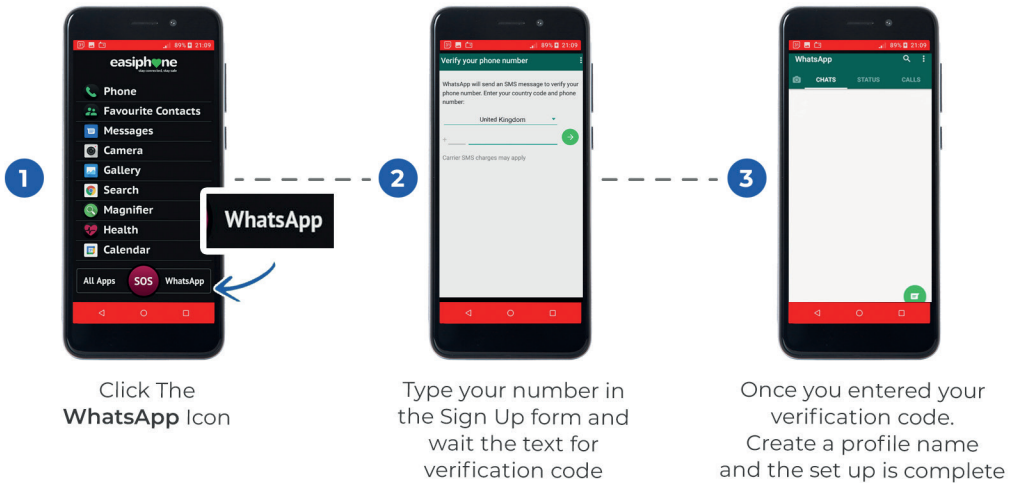
To Link a Photo to
a Contact (arrow a)

This opens edit
Contact function (arrow b)
Press this silhouette to
match Photo stored on
the Phone to a Contact
Save

To link that favourite Contact
to the Speed dial page please
long press the Speed dial box
and from the list of favourites
you can allocate the Favourite
to this Speed Dial box

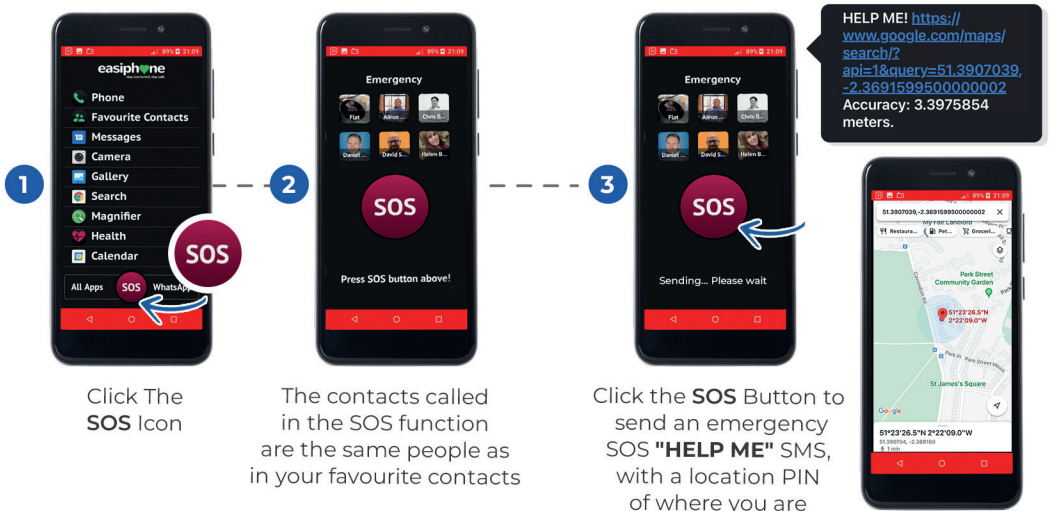
WhatsApp-Setup Guide

Now has WhatsApp pre-installed you must already have a WhatsApp account set up so our App can link to it.



-SOS Function

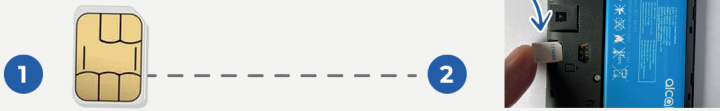
SOS Button for fast contact with loved ones.





How to insert SIM

Please note Easiphone are not responsible for any SIM top ups or activation issues, should you have any connection issues please contact the networks directly



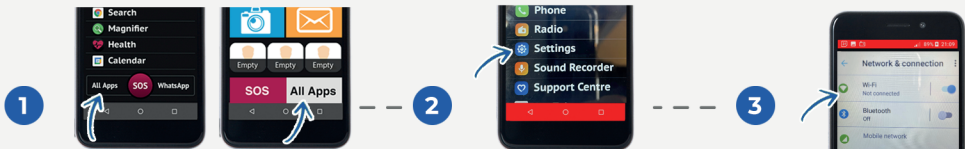
You can use your own SIM or any network you prefer but the SIM needs to be the smallest version called Nano size

Then carefully insert the Sim into the slot found on the left hand side of the Phone, screen face down and back cover off.

The bevelled corner goes in top Left



How to connect to Wifi



Please go to All Apps on your Home screen. You may need to do this twice depending on what Home screen is open

This will bring up this screen, now you need to go to and press Settings

Press Settings and this will take you to the Wifi Set Up page under Network and Connections. Here you will need to find your Wifi and enter your Password

easyphone

WATCH OUR VIDEO'S HERE

You Tube www.youtube.com/user/Easiphone1

OR CALL US NOW

0800 2545 365

Lines open 24/7

We are only a call away and here to help you.



www.easiphones.co.uk

info@easiphones.co.uk